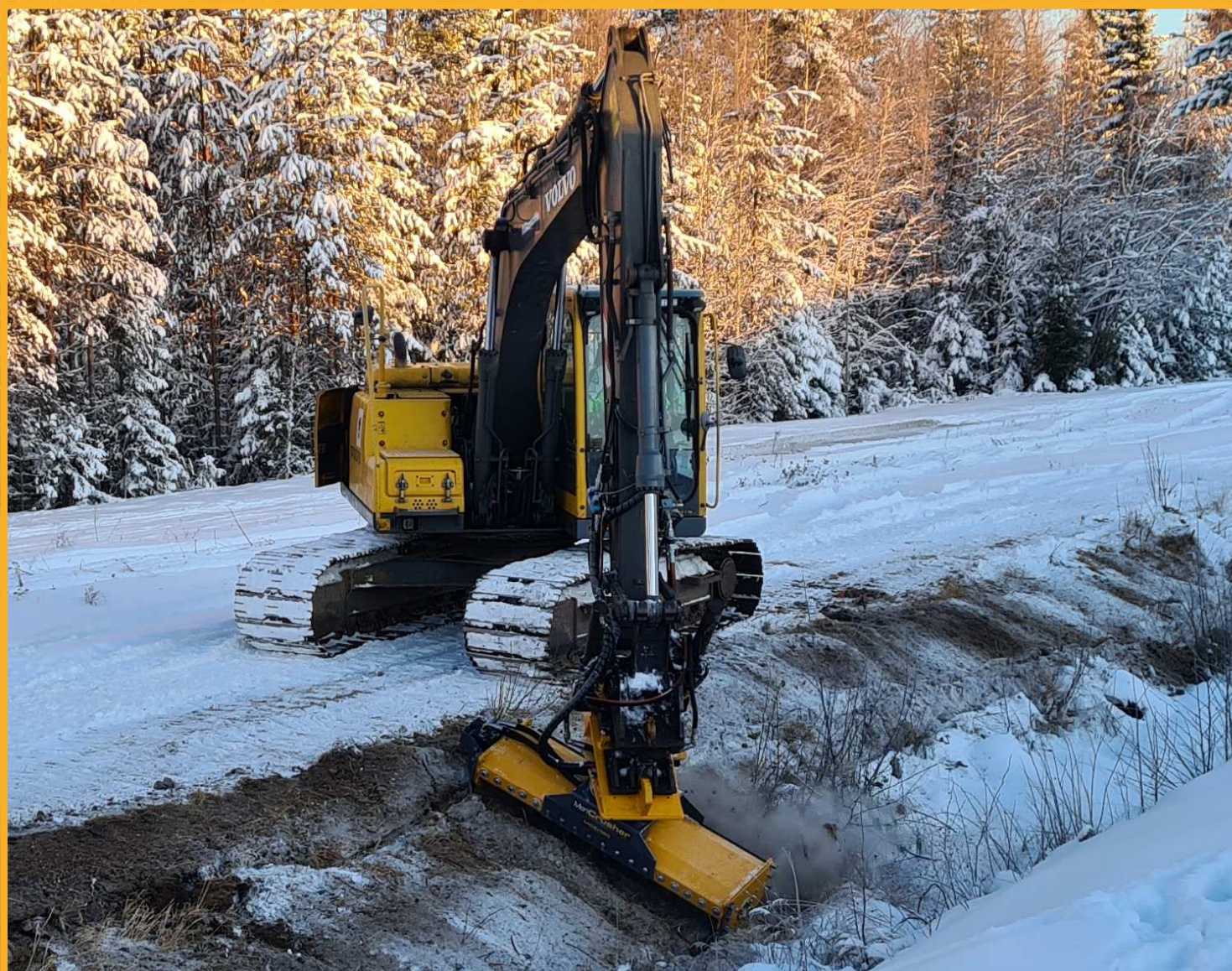


MERICRUSHER

MC4-230

For versatile crushing



MERICRUSHER

MERICRUSHER

MC4-230

For versatile crushing

MERICRUSHER WORKING ENVIRONMENTS

PROPERTY MAINTENANCE / GARDENING / CLEARING

- Removal of ice and hard packed snow from parking areas, inter sections and sidewalk.
- Crushing of small stumps and branches
- Clearing of vegetation and undergrowth
- Clearing and maintaining of green areas
- Clearing land before seeding and planting
- Maintaining of gravel roads and park paths
- Clearing of road sides from vegetation
- Clearing of ditch edges from vegetation
- Clearing of power lines from vegetation

EQUIPMENT

FEATURES

- Bolt mounted counter blades
- Fixed Hardox liner
- STD or STE Rotor with carbide cutters
- Possibility to turn the direction of the rotor
- Multiple options for base machine attachment

OPTIONS

- Support skids (pivoted)
- Hydraulic depth control
- Levelling plate and Flow control plate (for park path and gravel road maintenance)
- Rotator for excavators

Base machine demand

Small and medium size hydraulic carriers and excavators from 15-25 ton		
Mounting	SAE J2513 / NPT-10 / Vila / Kunta	
Hydraulic	Low pressure (case drain)	
Power range ST / DT	200-240bar 2900 / 3600psi	100-160 & 180-300 l/min 26-42 & 47-79 gal/min
Lifting capacity	Min 1500kg / 3300 lbs	

Technical data:

Transmission	Hydraulic	
Hydraulic motor	Low pressure - gerotor motor	
Hydraulic motor	Connected directly to rotor DT = 2 hydraulic motors	
Rotor diameter	400 mm	20 inch
Rotor width	2250 mm	89 inch
Cutter qty.	96 (T25 rotor)	
Working depth	200mm / 8 inch	
Main dimensions:		
Length	915 mm	36 inch
Width ST / DT	2495 / 2620 mm	98 / 103 inch
Height	930 mm	37 inch
Weight	600-1100 kg	1200-2400 lbs



SUOKONE OY
88610 Vuokatti
FINLAND

tel. +358 86 66 2011
suokone@suokone.com
www.mericrusher.com